



Paulet Road, Camberwell, SE5

1 bedroom flat - conversion for sale

£415,000

Leasehold

Property Details

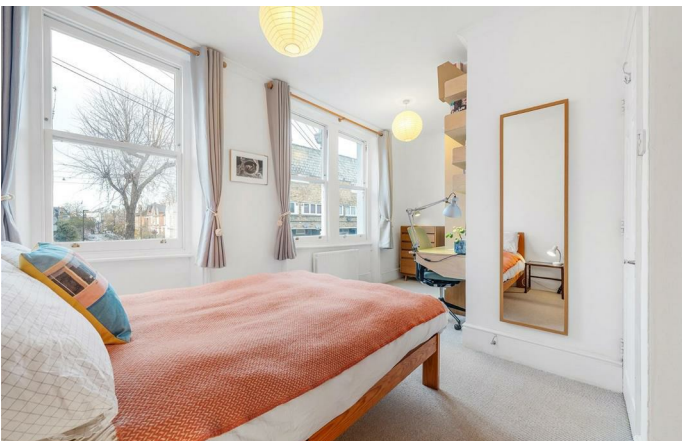
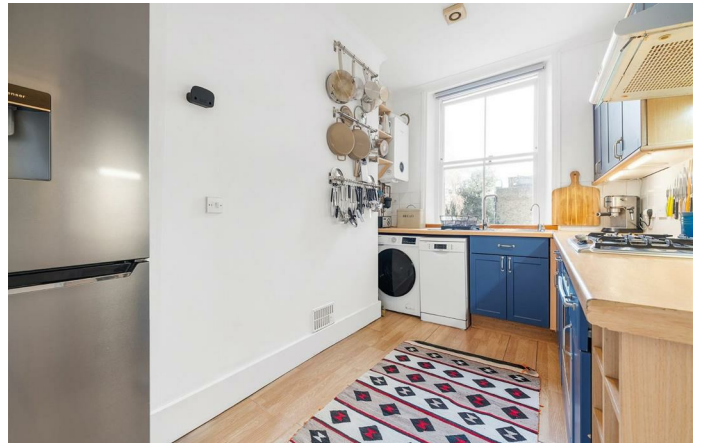
This charming one-bedroom apartment occupies the first floor of an elegant period house and features a south-east facing private terrace. The reception room, situated at the rear, offers a peaceful and versatile space for relaxation and entertaining, with soft carpeting, a working fireplace, and built-in shelving. French doors open onto the terrace, which has been recently re-tiled and provides a sunny, private spot for al fresco dining. The separate L-shaped kitchen is thoughtfully designed with blue cabinetry, sleek worktops, and a sash window framing a pleasant green outlook. The bedroom spans the full width of the property, with three sash windows filling the room with natural light, and bespoke built-in wardrobes, shelving, and a desk unit enhancing storage and creating a dedicated workspace. The neutrally tiled bathroom features an L-shaped shower bath and is conveniently positioned off the central hallway. This well-laid-out, characterful home combines light-filled rooms, practical improvements, and outdoor space in a desirable location.

Features

- One double bedroom
- Private south- east facing terrace
- Victorian conversion
- Separate kitchen and reception
- Over 570 square feet of internal living space
- Strolling distance to Brixton, Camberwell and Herne Hill
- Ten-minute walk to the station
- Minutes from Myatt's Fields Park
- Chain- free

Council tax band C

EPC rating C (72)





Paulet Road, Camberwell, SE5

Paulet Road, SE5
1 Bedroom Flat

APPROXIMATE GROSS INTERNAL AREA: 534 SQ FT / 49.6 SQ M



While we try our very best, floor plans are produced as a guide only and we take no responsibility for the precise accuracy with which any property is represented.

Paulet Road, Camberwell, SE5

